



## 23 Elim Close Bishops Waltham, Southampton, SO32 1NY Guide price £170,000

\*\*\*NO FORWARD CHAIN \*\*\* ALLOCATED PARKING \*\*\*

Welcome to this charming modern apartment in the sought after area of Bishops Waltham, Southampton. This modern apartment on Elim Close offers a delightful living experience. Built in 2000, the property is well presented throughout, showcasing a stylish design that is both inviting and functional.

The apartment features a comfortable reception room, perfect for relaxation or entertaining guests. The single bedroom provides a peaceful retreat, while the well-appointed bathroom ensures convenience and comfort.

One of the standout features of this property is the allocated parking space, a valuable asset in this desirable location. Residents will appreciate the ease of access to transport links, making it simple to commute to Southampton and beyond.

Whether you are a first-time buyer, a professional seeking a convenient base, or someone looking to downsize, this apartment offers a wonderful opportunity to enjoy modern living in a picturesque setting. With its blend of style, practicality, and a prime location, this property is not to be missed.

Viewing

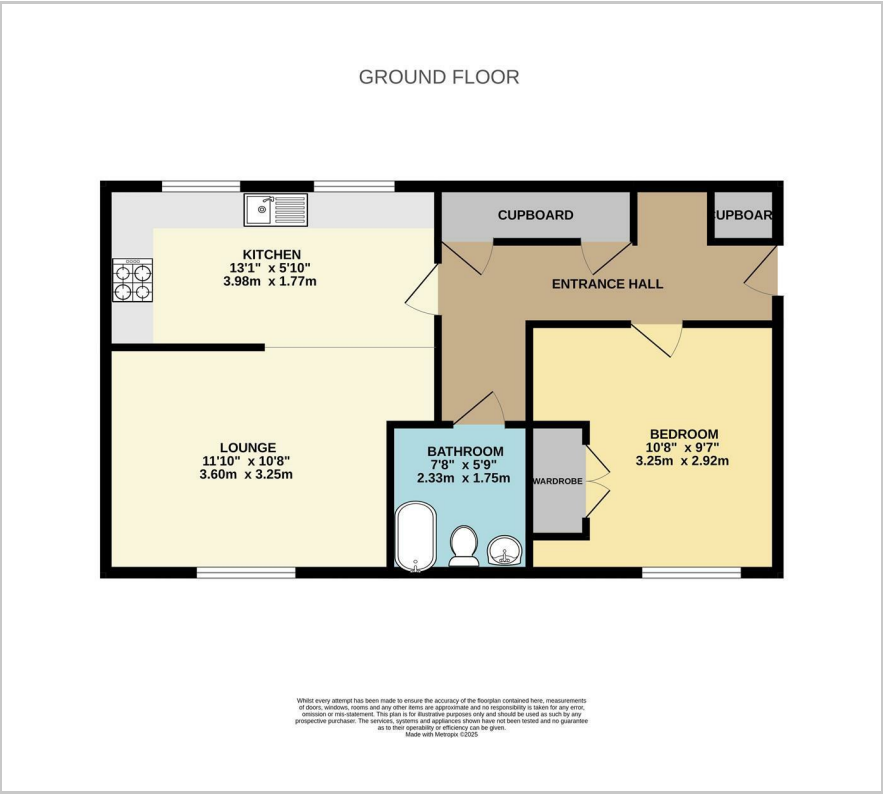
Please contact our ROK Marsh Office on 02393233267 if you wish to arrange a viewing appointment for this property or require further information.

- \*\*NO FORWARD CHAIN\*\*
- Allocated Parking
- Modern Finish
- Peaceful Setting
- Close to Bishop Waltham Amenities
- Good Rental Returns for Investors
- Pleasant Views
- Beautiful Market Town





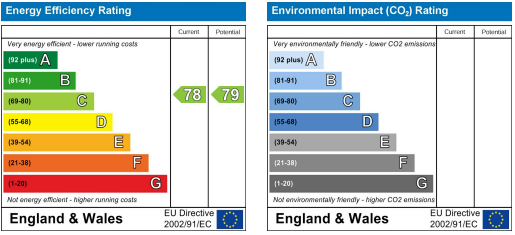
Floor Plan



Area Map



Energy Efficiency Graph



These particulars, whilst believed to be accurate are set out as a general outline only for guidance and do not constitute any part of an offer or contract. Intending purchasers should not rely on them as statements of representation of fact, but must satisfy themselves by inspection or otherwise as to their accuracy. No person in this firms employment has the authority to make or give any representation or warranty in respect of the property.